

charity

WINTER
2019

MATTERS

CELEBRATE
THROUGH
GIVING

MAKE A DIFFERENCE...

FUNDRAISE FOR US!

LEAVE A
GIFT IN
YOUR
WILL

SUPPORT
UCLH
CHARITY



Welcome...

Welcome to the second issue of Charity Matters. Our feet have barely touched the ground since the last issue. The new blood disorders, cancer and surgery centre grows daily before our eyes and the Royal National ENT and Eastman's Dental Hospitals is now open, welcoming its first patients.

Despite UCLH securing funding for the majority of the building and equipment costs for these projects, we depend heavily on our generous donors to help us make life for everyone EVEN BETTER!

You can find out how to support us over the forthcoming holiday season, and indeed all year, in this issue.

Huge thanks as always to all our wonderful donors without whom we just couldn't function. Have a great Christmas, seasonal break and new year.

I can promise that we'll return with even greater energy in 2020!

Professor Jeffrey Tobias
Chair, UCLH fundraising



Together we can do more

WAYS TO CONTACT US

WRITE

Third Floor East, 250 Euston Road,
London NW1 2PG

CALL

020 3447 9361

EMAIL

uclh.enquiry.charity@nhs.net

DONATE

www.justgiving.com/uclhcharity

www.uclhcharity.org.uk

UCLH Charity

Registered Charity No.1165398

WELCOME

About UCLH Charity

Every year, UCLH Charity helps bring festive cheer to patients and staff alike.

Patients who are in hospital over Christmas receive a gift from the Charity; last year's gifts included water bottles, phone chargers, light boxes, teddy bears and baby grows for newborn babies. The gifts are warmly received by patients who are often away from their families and loved ones at this special time of year.

The holiday season also provides a rare opportunity for staff to get together. We provide a small grant for



Last year's Christmas presents

every member of staff to join their team for a well-deserved festive together.

We work all year to improve staff and patient experience - you can help us do more by donating to our general fund via JustGiving at www.justgiving.com/campaign/supportuclh

New Royal National ENT and Eastman Dental Hospitals...



UCLH Charity funded this ceiling light

Two international centres of excellence - the Royal National Ear, Nose and Throat Hospital and the Eastman Dental Hospital - have come together to create a hub for care, treatment and research into head, neck, ear, nose, throat, dental and oral conditions. Charitable donations have helped to enhance this stunning new facility, making it the very best it can be. Items funded by philanthropy include:

- The Graham Fraser Auditory Implant Centre
- Backlit photographic ceilings that offer patients a view of nature whilst receiving their dental treatment

NOW OPEN

- Texture of Air, is a backlit photographic artwork which depicts the RNTNE and the EDH
- High tech training equipment for the Education Centre

We would like to thank our generous donors for their support. There is always more we can do to support ENT and dental services, contact louise.davey@nhs.net if you'd like to raise money for these services.



New Royal National ENT and Eastman Dental Hospitals

Taylor Family Foundation funds Proton Beam Therapy common cancers research team

Jan Taylor, through the Taylor Family Foundation, has partnered with UCLH to fund our first dedicated Proton Beam Therapy common cancers research team. The Foundation's generous gift of £1m plus over five years will enable UCLH to create a specialist research team in preparation for the opening of the new Proton Beam Therapy centre in 2020. This exciting development has the potential to pioneer a radical change in Proton Beam Therapy being available for more cancer patients.

FURTHER MATCHED FUNDING IS REQUIRED
Contact Carol Haraldsson on 020 3447 9360
for more information.

New year, new you!

New Year is a great time for you to make New Year's resolutions and set some goals that aim to improve our life and life of those around us. This year UCLH Charity has a programme of events to help you achieve this.

Some of these events are listed below. If you would like more information about these or other events, or you are considering taking part in another challenge, please let us know. We are here to support you! **Happy New You!**

2020 PROGRAMME

- Royal Parks Half Marathon
- Hackney Half
- Tough Mudder
- Jump with us day (Skydive)
- London Bridgathon
- Dolomites cancer cycle
- London to Paris cycle

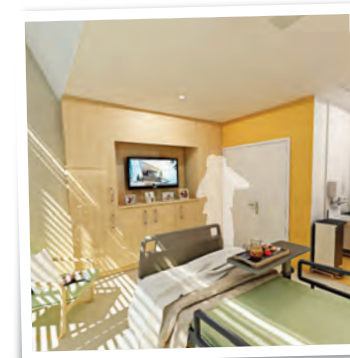


Thanks to all our walkers this year- check out our next edition to see how much we've raised.

Support blood disorders in our new centre

UCLH will be home to the largest haematology centre in Europe when the new blood disorders, surgery and cancer centre opens in 2020. The hospital will cost £227million but we need to raise £15million to create the environment that we feel is essential for the wellbeing, dignity, comfort - and improved medical outcomes - of these patients. We need to raise funds from the

philanthropic community and individual donors. Gifts of any amount can help us to fill this gap.



YOUR GIFT OF...

£100+

could provide art and environmental enhancements to rooms and corridors, proven to reduce stress, pain and improve medical outcomes.

£2k

could provide a patient with 3D virtual reality goggles to help pass the time and to provide distraction from painful procedures.

£5k

could provide a patient with an interactive 3D gaming device.

£7k

could provide all 'above and beyond' items needed for one inpatient room including a large TV screen, art and a comfortable pull out bed for families to stay over.

£10k

could transform a staff room with basic facilities to a welcoming space where staff can rest and recharge during long shifts.

To find out more, call us on 020 3447 9360.
Donations can also be made online via JustGiving at
www.justgiving.com/campaign/cancerandsurgery

Celebrate Christmas with the gift of giving

It's the most wonderful time of the year! Help us do more this Christmas by supporting our festive activities.

From carol concerts and Christmas cards to the Santa fun run and the festive open event, we've got lots of different ways for you to get involved and support us this festive season. Money raised will go to support patient care at UCLH.

Come to our carol concert

THURSDAY 19 DECEMBER,
6.15 PRE RECEPTION,
7PM START,
ST GILES-IN-THE-FIELD,
LONDON WC2H 8LG



The 2018 carol concert

We're delighted to host another UCLH Charity Christmas carol concert this year. Join us at the beautiful St Giles-in-the-Field Church at 6.15pm for mulled wine and mince pies before the concert starts at 7pm. Tickets are £15.00, £12.50 concessions, £5.00 children, under 5s go free. Please use the order form on the back page to order your tickets or go to eventbrite.co.uk

Santa fun run Sunday 8 Dec.



Every year 4,000 santas descend on Victoria Park in east London for the famous Santa Dash. You could be one of them! Choose from a 5km or 10km distance to take part and raise a minimum of £100.00 for UCLH Charity. Email: uclh.enquiry.charity@nhs.net



Festive fun at last year's event

Join us at the festive open event

THURSDAY 5 DECEMBER, 4.30 - 6.00PM,
UNIVERSITY COLLEGE HOSPITAL

Join us at the annual festive open event where you'll also be able to enjoy music from Camden Voices and Concordia Foundation, participate in creative art making and grab a mince pie before seeing the Christmas lights being switched on by a very special guest. There will also be the opportunity to support UCLH Charity by buying our Christmas cards, writing a reflective heart and seeing what we've got planned for 2020. There's no need to book, just turn up on the day.

Last year's special guest Jamie Cullum with UCLH nursing staff

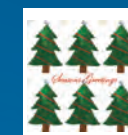


Reflect, with a heart

Christmas is a time to reflect on the year gone by. Leave your message of thanks, remembrance and support, and have them displayed on Christmas trees across UCLH. Take part by following the instructions on the right of this page. Don't forget to tell us if you'd like your donation to go to a particular ward, department, project or team. Alternatively we'll use your donation where it's most needed.



Christmas cards for a great cause



Tree

Reindeer

London scene

Funds raised from our penguin cards go to the UCH Cancer Fund. Please note they are slightly larger in size, 15 x 21cm

Send festive greetings and donate to a good cause this Christmas season by purchasing our Christmas cards. We have four designs to choose from. Use the order form to make your selection. Cards are a suggested donation of £3.50 per pack of 10.

Christmas sales @UCLH

We look forward to seeing you out and about at UCLH during the festive season. Come and see us at our Christmas sales at the following locations to buy cards, carol concert tickets and reflective hearts.

University College Hospital Main Atrium

20 Nov - 12:00 - 15:00
25 Nov - 10:00 - 13:00
03 Dec - 12:00 - 15:00
11 Dec - 11:00 - 14:00
17 Dec - 12:00 - 15:00

University College Hospital Macmillan Cancer Centre

03 Dec - 11:30 - 14:30
06 Dec - 11:30 - 14:30
11 Dec - 13:30 - 14:30
16 Dec - 11:30 - 14:30

250 Euston Road Atrium*staff only

06 Nov - 11:00 - 14:00 09 Nov - 11:00 - 14:00

OUR REFLECTIVE HEART CHRISTMAS CAMPAIGN - IN NUMBERS

2000
MESSAGES



5 XMAS
TREES AT



£51k
RAISED SO FAR



We ♥ Christmas

Here's how to take part in our reflective hearts campaign

- Unpeel the removable heart from this page
- Write your message on the heart - this could be to remember someone, to say thank you to staff at UCLH, to reflect on 2019 or to simply wish happy Christmas
- Send it to us, together with a donation using the order form on the back page of Charity Matters
- Our suggested minimum donation is £10.00 but you can give as little or as much as you like
- Alternatively visit www.justgiving.com/campaign/reflectiveheartxmas19, write your message and leave a donation online
- We will place your message on one of our Christmas trees, come along to read all the inspiring messages.

Thank you for taking part in our reflective hearts campaign, we are very grateful for your support and wish you a happy, healthy Christmas.



WHAT WILL YOU WRITE ON YOURS?

Better together

At UCLH, it's all about teamwork. By working with national charities and local companies, we make services better, together.

LOCAL LINKS

We are delighted to have the support of the Fitzrovia Partnership, a collective of 270 businesses in our local community.

This connection has put us in touch with many local businesses including Indian street food restaurant Pilau who are providing lunch on the young people's ward at University College Hospital on Mondays. Pilau founder, George Pitkeathley, who personally delivers the food said, 'We were lucky enough to meet some of these brave individuals and listen to their incredible stories as well as break bread with the heroic nurses and doctors who look after them all'. UCLH staff are also offered a 20% discount. Thank you George and Pilau!



Pilau founder George (second left) with nursing team

Early Lives sunny Sunday afternoon picnic event



Zoe (L) and Leia (R) FitzGerald at the Early Lives picnic

The Fitzrovia Partnership also very kindly introduced us to the Fitzrovia Centre, the perfect venue for Early Lives' first family event, a picnic on a sunny Sunday afternoon in September.

Early Lives enhances the care provided by the neonatal team and covers costs for things the NHS can't stretch to such as neonatal research, specialist equipment and staff training. The fund also makes life easier for families at an emotionally, financially and logistically challenging time.

This first event brought patients, their families and staff together. David, dad

to Zoe and Leia FitzGerald who spent time on the neonatal unit as babies, said, "We really enjoyed the picnic. It was a lovely and rare opportunity to talk about shared experiences with other parents who'd also had babies at the UCH neonatal unit."

Highlights included delicious cupcakes, face painting and a teddy bear hospital. Thank you to Planet Organic for providing goodies and to the Fitzrovia Centre for the space.

Find out more about Early Lives at www.earlylives.org or www.facebook.com/earlylives

Thank you YOU'RE amazing!

We are so grateful to our supporters who go the extra mile and so much more to raise money to support services at UCLH.



John Inman

John rode London for us in August. "I was inspired to take on the RideLondon for UCLH Charity after volunteering at UCLH. During my time there, I saw the commitment

from staff and the high standards of patient care and treatments. I wanted to support UCLH Charity because it supports both patients and staff - raising funds to help provide equipment for innovative cancer treatment as well as for staff training and wellbeing days. The ride itself was fantastic, there was a real sense of camaraderie amongst all the riders and it was great speeding through central London and tackling the Surrey hills on traffic free roads! Finishing on the Mall was a fitting ending to the challenge and I would fully recommend anyone to take it on."

I WAS INSPIRED TO TAKE ON THE RIDELONDON FOR UCLH CHARITY AFTER VOLUNTEERING AT UCLH

Duncan did the Ealing half marathon in September: "My son Jamie was diagnosed with Hodgkin Lymphoma in November 2017 when he was in a gap year. We were lucky that he was able to be treated at the young adult unit at UCLH and he was declared free of cancer in April 2018, starting at Durham University as planned in October. At his annual check up, we found that the cancer had returned and he is now receiving treatment. He has approached his treatment with courage and dealt with the setbacks with a maturity and good grace that I have been so impressed by. As a family, we wanted to do our bit. With several thousand other runners, we braved the potential downpours to "enjoy" the Ealing half marathon. In the end the weather held off and the support



Duncan Tatton-Brown

WE HAVE RAISED OVER £50,000 TO DATE

was amazing. Thanks to masses of support we have raised over £50,000 to date which will go towards the new centre for blood disorders, cancer and surgery. Thank you to all those who have and are contributing to the tremendous treatment and care at UCLH".



Five years ago Janet was treated for cervical cancer at UCLH. As a thank you, she arranged a garden party, "After my treatment and fantastic experience, I wanted to do something to give back" she said. Following the success of the first party, it's become an annual celebration that keeps growing! This year's event raised £6,000 for cancer services, adding to an impressive total of £23,975.

To do your own thing and support a service close to your heart contact the fundraising team uclh.enquiry.charity@nhs.net

Royal Parks Half

Thank you to our runners and supporters who turned out on a very soggy Sunday for the Royal Parks Half Marathon in October. In contrast to the rain and mud, the atmosphere was cheery and our runners did us proud! The Royal Parks Half is a beautiful run through London's green spaces and iconic landmarks. If you'd like to take on a challenge for UCLH Charity, talk to our fundraising team on 020 3447 9361.



Royal Park runners



By leaving a gift to UCLH in your will today, you are helping us to continue to provide the best possible care for generations to come.

Your gift will help us fund the latest medical equipment, pioneering research and improvements to services that the NHS cannot realistically provide.

Thank you for considering leaving a gift. Please contact us on 020 3447 9361 or email us at uclh.enquiry.charity@nhs.net to find out how you can make a lasting difference.

Thank you to all the solicitors that took part in this years 'Make a Will Week' campaign. We will let you know how much was raised in our next issue of Charity Matters.

PLEASE CUT HERE AND RETURN IN ENVELOPE TO ADDRESS SHOWN



ORDER FORM

I ENCLOSE A DONATION FOR THE FOLLOWING:



Item	Suggested donation	Quantity	
Christmas carol concert tickets	£15.00/£12.50 concs/£5.00 children/under 5s go free		£
Pack 10 x Christmas cards - Penguin (15 x 21cm)	£3.50		£
Pack 10 x Christmas cards - Christmas tree	£3.50		£
Pack 10 x Christmas cards - Reindeer	£3.50		£
Pack 10 x Christmas cards - London scene	£3.50		£
Reflective heart	£10.00		£
I would like to make a single donation to UCLH Charity this Christmas			£
I would like my donation to go to: <input type="checkbox"/> where it's most needed <input type="checkbox"/> to a particular ward or service			

You can send your donation via cheque or card by following the instructions below:

I would like to make my donation via:

☐ Cheque ☐ Card

Name:

Address:

Postcode:

Email:

Contact number:

I enclose a cheque/CAF voucher made payable to UCLH Charity
Or I wish to make my gift by:

☐ Visa Debit ☐ Maestro ☐ Mastercard ☐ Visa

Name of card holder:

Card number:

Issue number: (Maestro only)

Start date: Expiry date:

Security code: (last 3 digits on the back of your card)

Once complete, please return this form to:
FREEPOST RTKU-LJHX-LEJH
UCLH Charity, 4th Floor Tower, University College Hospital
235 Euston Road, London NW1 2BU

Data protection

Your data is securely held on a database at UCLH and will be treated confidentially with respect for the benefit of UCLH Charity and its constituent parts. We will use this information to keep you informed of our activities. We will not sell, distribute or lease your personal information to third parties unless we have your permission or are required by law to do so. If you would like any more information or would rather not hear from us please contact us at uclh.enquiry.charity@nhs.net

Please keep me updated about UCLH Charity news and events via:

☐ Email ☐ Post ☐ Telephone ☐ Text

giftaid it

Gift Aid Declaration - making your gift go further

I am a UK tax payer and would like UCLH Charity to treat all donations I make or have made for the past four years as Gift Aid donations until I notify you otherwise.

I am a UK taxpayer and understand that if I pay less Income Tax and/or Capital Gains Tax in the current tax year than the amount of Gift Aid claimed on all my donations it is my responsibility to pay any difference. I understand that other taxes such as VAT and Council tax do not qualify and that the UCLH Charity will reclaim 25p of tax on every £1 that I give.

Signature

Date

UCLH
charity

UCLH Charity
Registered Charity No. 1165398