



**Annual Review**  
2009-2010

*Providing extra support, making a real difference*

# Our story

*UCLH Charity supports patients, staff and medical research at UCL Hospitals NHS Foundation Trust. We aim to make a real difference and everything we do supports the patients treated by our six hospitals, directly or indirectly.*

This could include:

- buying an important piece of medical equipment to enhance treatment
- improving the hospital environment by providing flowers and art
- funding extra training or conferences for staff
- pump-priming research, which may lead to the development of better therapies.
- Targetting grants to foster innovation within the hospitals.

We support the work of two other related charities, working collaboratively with them and sharing facilities:

- The Friends of UCLH, which provides grants to support the hospitals
- The London Pathway, which improves healthcare for patients who are homeless.



*Improving healthcare for homeless people.  
UCLH Charity provided the initial finance for The London Pathway, which recently won a prestigious award for tackling homelessness in the capital.*

*The hospitals we support are:*



**Eastman Dental Hospital**



**The Heart Hospital**



**Hospital for Tropical Diseases**



**National Hospital for Neurology and Neurosurgery**



**Royal London Hospital for Integrated Medicine**  
*(formerly the Royal London Homoeopathic Hospital)*



**University College Hospital**  
*(incorporating the former Middlesex and Elizabeth Garrett Anderson Hospitals)*

# The story so far



*Hyper-Acute Stroke Unit*  
Dr Nick Losseff  
and Sister Simone Browning

*This year the Charity has funded £7.5 million worth of hospital projects. A full breakdown of the figures is provided on page 6, but here are some of the highlights:*

## Medical equipment and infrastructure

- We granted £283,000 towards a new Hyper-Acute Stroke Unit, which opened in summer 2010 and is the only centre of its kind in North Central London.
- Dividends from QS Enterprises (our wholly owned subsidiary) provided £683,000 to enhance facilities at the National Hospital for Neurology & Neurosurgery.
- Ward and consultant funds totalling £578,000 were used to buy much-needed small items of computer equipment and make larger contributions towards facilities.

## Provision of staff and professional services

- A grant of £250,000 was awarded to help the Foundation Trust's bid to become one of only two Proton Beam Therapy (PBT) centres in the UK. PBT, a new and advanced form of radiotherapy, targets tumours far more accurately than conventional methods and would enhance the Trust's international profile in cancer services and provide significant research benefits.
- Some £940,000 went to employ additional staff – complementary therapists, nurses, volunteer coordinators and a trainee chaplain.
- A contribution of £200,000 was made to support the establishment of UCL Partners, the Academic Health Sciences network incorporating the Foundation Trust, University College London, Great Ormond Street, Moorfields and other key clinical centres.



*Cliff Anderson*  
brightening up the wards with flowers



*Musicians performing in UCH*

## Patient welfare and amenities

We continued to support arts and music projects for patients and supply fresh flowers for ward and hospital reception areas. An extra £36,000 enabled decorative tiles and stained glass salvaged from The Middlesex Hospital and Elizabeth Garrett Anderson Hospital – which are of historic and aesthetic interest – to be displayed in University College Hospital and the Elizabeth Garrett Anderson wing.

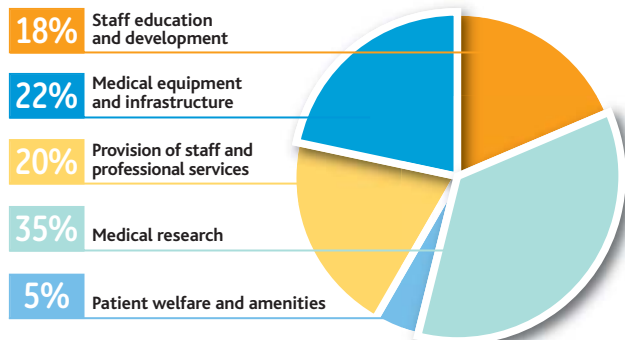
A grant of £41,000 over two years was approved to employ a Reiki healer at the Royal London Hospital for Integrated Medicine. We also provided funds to buy presents for patients in our hospitals over Christmas and provide cash grants to those who need financial help when they are discharged.

## Research

Due to the record grant of £7m in 2008-09, the Trustees research funds are now controlled by the Comprehensive Biomedical Research Centre. They are being used to support high-quality research in areas of developing potential, such as women's health, gastroenterology, hepatology, long-term conditions and respiratory, anaesthetics and critical care.

Ward and consultant funds contributed most of this year's £2.6m expenditure, mainly supporting researchers and providing consumables, but also funding conferences to share the results of research work with the international academic and clinical communities.

The Trustees also allocated £100,000 to fund a Research Coordinator post at the Royal London Hospital for Integrated Medicine for two years.



# Our fundraisers' stories

Nearly two-thirds of the money we receive comes from donations and most of that is given to specific wards and departments. We have a lot of fantastic supporters and would like to take this opportunity to thank everyone who has contributed over the last year. Here are just a few examples:

The Mothers and Daughters Committee held a fundraising event at Quaglino's Restaurant, which raised £330,000 to support Dr Paul Mulholland's research work into Glioblastoma multiforme, the most common and aggressive type of primary brain cancer.

Bruce Milroy and two friends cycled the length of the country, from Land's End to John O'Groats, in memory of their friend, Olympic swimmer Paul Marshall, and to raise awareness of the radio frequency ablation treatment that helped prolong Paul's life. The £14,000 they raised will help to train other doctors to deliver this less invasive therapy.

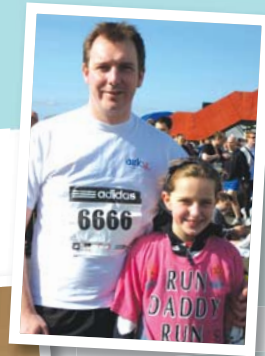
Consultant Dan Wood celebrated his 40th birthday by running the New York marathon and raising more than £2,000 for adolescent urology.

We are also grateful to donors who gave to our general funds, which support both large capital projects and smaller items such as flowers for wards and special Christmas meals. In particular, we were delighted to receive a donation from Margaret Collis who underwent surgery for a hole in her heart at The Middlesex Hospital in 1959. The 18-year-old was only given a 50% chance of survival, but is healthy and active more than 50 years later.

Gift aid from subsidiaries included funding from QS Enterprises, a company owned by UCLH Charity, which provides Magnetic Resonance Imaging (MRI) scanning to private patients and the NHS. In 2010, QS Enterprises expanded its operation to serve the Heart Hospital, providing state-of-the-art cardiac MRI for diagnosis.

Meanwhile, our newly established subsidiary, Inventive Medical Ltd, was busy selling its 'virtual heart' training aid for cardiac anaesthetists, gradually building up its reputation and sales.

## OUR FANTASTIC VOLUNTEERS!



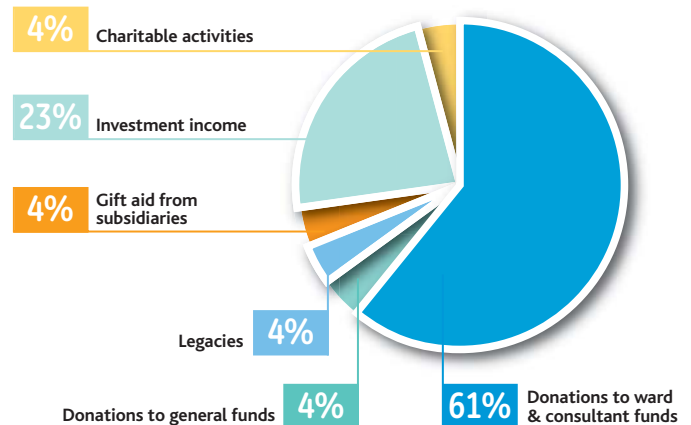
Consultant Dan Wood with his daughter at the New York marathon



Olympic swimmer Paul Marshall with friend Bruce Milroy



The Mothers and Daughters Committee



We are also very grateful to Foundation Trust staff for raising money through charitable activities – running educational courses to share their expertise and learn from peers. These events are crucial, not just for the income they generate, but because pooling knowledge and comparing best practice benefits patients throughout the NHS as well as in our hospitals.

Our investment income comes from both stock market investments and property and enables us to cover our administrative expenses so that everything we receive from our donors can go towards charitable activities. Properties include offices leased to the Foundation Trust and some residences for key staff. In 2010-2011 we plan to invest in a patient hotel – you can read more about this on the opposite page.

# The story for next year

*UCLH Charity exists to support the Foundation Trust, and, through the Trust, to provide additional benefits to patients. We align ourselves with the Trust's strategy to ensure that our funds are directed to the clinical priorities identified by the Trust.*



*Artist's impressions of the UCH Macmillan Cancer Centre*

Our key priority for 2010-2011 will be the University College Hospital (UCH) Macmillan Cancer Centre, which is scheduled to open in 2012 and will provide a range of daycare and outpatient services. As many patients will need to return for a number of days, our key priority is to establish a patient hotel that will provide them with overnight accommodation.

The Trust currently uses rooms at a local hotel to accommodate patients who do not need a hospital bed, but who have to be close to the hospital between treatments. We plan to provide a similar standard of accommodation, but with common areas for relaxation and facilities for cooking and laundry. This is very important because patients derive considerable benefits from the support that their partners, families and other patients can provide during treatment.



*Be part of our story ...*

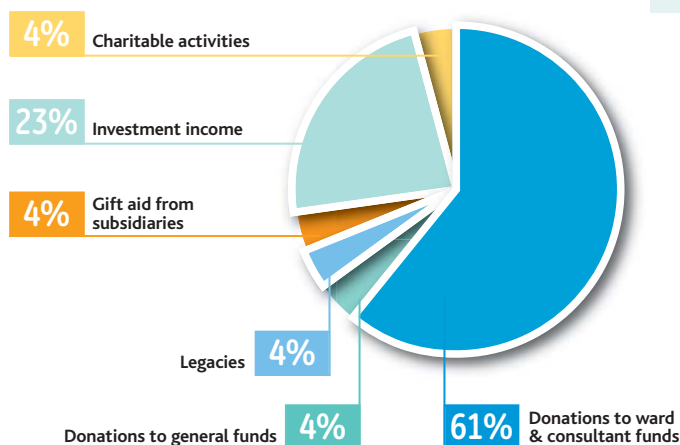
We can only support the hospitals, and help patients, because of the support we receive from the public, through donations or fundraising events. **Your help is vital** – whether you make a donation, take part in a fundraising event, volunteer or just tell us about your experiences of using our hospitals. We are also very grateful to people who remember us in their will as legacies are another important source of income.

# The story in numbers

Here is an extract from our audited accounts for 2009-2010. If you would like a full copy of the accounts, you can either download them from the Charity Commission website (by inserting our charity number 229771 in the search box) or contact us for a copy.

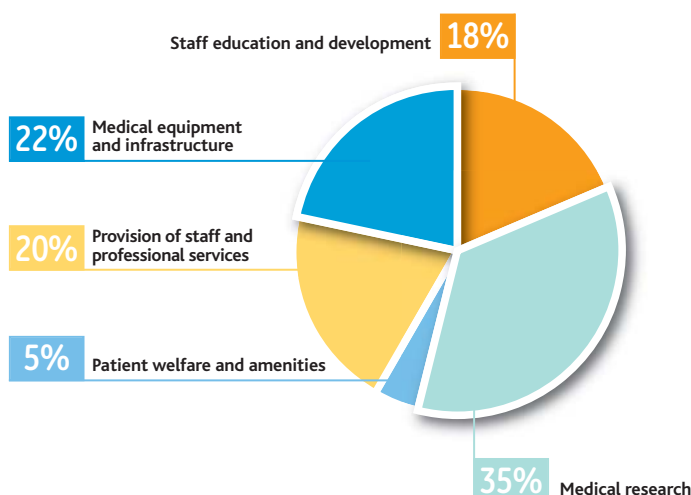
	2010	2009
	£'000	£'000
<b>Incoming resources</b>		
Voluntary income	5,878	6,687
Investment income	1,886	2,241
Charitable activities	353	193
	<b>8,117</b>	<b>9,121</b>
<b>Outgoing resources</b>	<b>2010</b>	<b>2009</b>
Costs of generating funds	563	460
Charitable activities	7,507	17,916
Governance costs	430	299
	<b>8,500</b>	<b>18,675</b>
<b>Net outgoing resources for the year</b>	<b>(383)</b>	<b>(9,554)</b>

Some of the stories behind the numbers are told on pages 3 and 4.



## INCOME - TOTAL £8,117K

Analysis of income	2010
	£'000
Donations to ward and consultant funds	4,893
Donations to general funds	276
Legacies	351
Gift aid from subsidiaries	358
Investment income	1,886
Charitable activities	353
	<b>8,117</b>



## ANALYSIS OF CHARITABLE EXPENDITURE - £7,507K

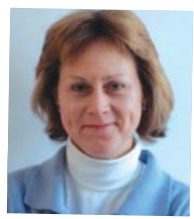
Analysis of charitable expenditure	2010
	£'000
Medical equipment and infrastructure	1,627
Provision of staff and professional services	1,506
Patient welfare and amenities	346
Medical research	2,638
Staff education and development	1,390
	<b>7,507</b>

*The Charity is very fortunate to have a committed group of volunteers with a wealth of relevant experience as its Trustees. Their knowledge and experience is invaluable, both for determining the Charity's strategic aims and assessing the suitability of projects to be funded.*

## Our Trustees



Lord Latymer  
(Chairman)



Mrs Sooty Asquith



Professor  
Sue Atkinson CBE



Hon Mark Bridges



Professor Peter Ell  
FMedSci Dr DC



Dr Victoria Harrison



Chris Russell



James Thorne

**Lord Latymer** (Chairman) is a former director of Cazenove Fund Management Ltd. His in-depth investment knowledge ensures that the Charity gets the best return on its investments, without taking unreasonable risks.

**Mrs Sooty Asquith** is Chairman of Governors of a large special needs' school in Wandsworth and has 20 years' experience of NHS hospitals, as she has a handicapped son. She is a fundraiser for The Challenging Behaviour Foundation.

**Professor Sue Atkinson CBE** is a public health doctor. In 1999, Sue was appointed Regional Director of Public Health for London at the Department of Health. From 2000, she developed the role as Health Advisor to the Mayor of London.

**Hon Mark Bridges** is a partner in the law firm Farrer & Co, which is at the forefront of charity law. He was appointed Private Solicitor to Her Majesty The Queen in 2002. Mark's experience of trust law has been of great practical help to the charity. He is also a Trustee of the Leeds Castle Foundation, Chairman of the charity Music in Country Churches and serves on the Board of Governors for several schools. His appointment as a Trustee finishes in 2010 and we are very grateful for his contribution over the years.

**Professor Peter Ell FMedSci Dr HC** is a Senior Investigator with the National Institute for Health Research. His recent awards include the British Nuclear Medicine Society First Medal for Outstanding Contributions to Clinical Science and the USA Georg de Hevesy Pioneer Award.

**Dr Victoria Harrison** has held successive posts with the Medical Research Council and the Biotechnology and Biological Sciences Research Council. Her experience as Chief Executive of the Wolfson Foundation is invaluable to us as a grant-giving charity.

**Chris Russell** is a retired consultant surgeon and clinical director of UCLH NHS Foundation Trust. He is a former Chairman of the Board of the British Journal of Surgery and is currently Vice President of the Royal College of Surgeons.

**James Thorne** was appointed as a Trustee in autumn 2010. He was until April 2010 a partner in the law firm Farrer & Co, and now works for that firm as a consultant. He is the General Editor of the Butterworths Guide to the Legal Services Act 2007. While at Farrers he was involved in its management and encouraged voluntary activities among staff, including choral singing and running half-marathons. He is a Governor of the University for the Creative Arts.



## Our Staff

The day-to-day operations of the Charity are overseen by Philip Brading, the Chief Executive. Prior to his appointment in 2007 he was a Trustee of the Charity and a non-executive director of the Foundation Trust.

He is supported by an administrative team of 10 staff.



UCLH Charity, 5th Floor East, 250 Euston Road, London NW1 2PG  
Charity Registration Number 229771

[www.uclhcharity.org.uk](http://www.uclhcharity.org.uk)